



# Don't Trash Your Electronic Waste

by [Anisa Williams](#), BSS Staff

Business System Solutions is your IT Service Partner who provides peace of mind through guidance, education, and responsive support. Serving communities in Indiana, Tennessee, and Michigan.

## Caretakers of Your Productivity.

For you created my inmost being, you knit me together in my mother's womb. I praise you because I am fearfully and wonderfully made, your works are wonderful, I know that full well.

Psalms 139:13-14

## Proper recycling of electronic waste means being a good steward for your data, security, and the environment.

In the digital age, we treat electronics as disposable items but we should be thoughtful when it's time to get rid of them. Electronic waste (e-waste) is the fastest growing waste stream globally and in 2024, the US alone produced nearly 8 million tons of e-waste. Of that, only 15% is estimated to have been recycled, which means 6.7 million tons ended up in landfills. A recent UN report estimates that Americans will add an additional 1.2 million tons to our totals each year.

E-waste can refer to anything with a battery, a plug, or a circuit board, and every device has a built-in expiration date. Laptops have an average shelf life of five years, desktop computers seven, and servers ten years. Cell phones have an average lifespan of two years and are one of the most common items found in a landfill.

There are two major concerns when looking to get rid of electronics: your data and toxic chemicals.

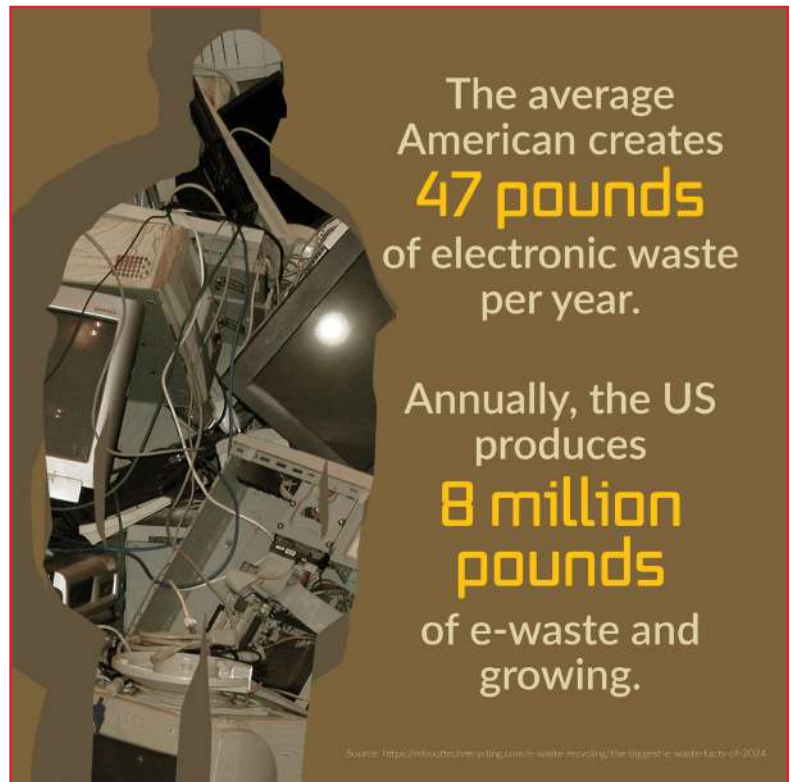
## Leftover Data is Dangerous

Most electronic devices have some kind of memory that houses residual data, including personal information, login credentials, browsing or connection history, financial data, client or employee records, and/or physical location.

Trashing electronics without properly wiping the data stored in it can be a security nightmare: Not only is it irresponsible and illegal in some states, but *anyone who finds that device can rehabilitate it and steal the information.*

There are many stories of firewalls, computers, and even old gaming consoles being pulled from dumpsters by enterprising repairers, only to find the information on the device gives them admin credentials or backdoors to the network.

Every device with data should be wiped before it is physically destroyed. This requires a few extra steps that may include a software wipe, removal of any hard drives or memory storage, and physical shredding. A properly wiped and destroyed device will be documented on a Certificate of Destruction from a tech recycler, ensuring that the data chain of custody has been completed.



## Made with Toxic Chemicals

When e-waste is thrown away, it can release up to 1000 different chemical substances into the environment and watersheds, including known neurotoxins such as lead, lithium, and mercury. The majority of solid waste recycling facilities are unable to process these chemicals as it requires adherence to specific regulations and safety protocols. At dedicated e-waste recyclers, these dangerous materials are safely collected and delivered to local manufacturing facilities that reuse these metals, plastics, and chemicals.

Properly recycling electronics ensures that valuable materials such as steel, glass, and plastic, as well as precious metals such as copper, gold, tin, silicon, and aluminum are reclaimed to be made into new products, which bypasses normal mining methods.

## Decommission and Destroy

Proper disposal processes are critically important to ensure that your data and information is cleared and destroyed at end of life. Check with your organization or IT company to ensure that when your computers are at end of life, they are going through a decommission process and recycled with a provided Certificate of Destruction. BSS takes care of our clients with a documented decommission process, Chain of Custody, and Certificate of Destruction records for all equipment.

## Partner with Trusted E-Waste Recyclers

Many communities don't have municipal e-waste recycling programs, however there are several

private recycling programs that support donation events or sometimes offer buy-back options for e-waste. [Best Buy](#) accepts small devices like mobile phones, however it's best to find a local recycling company near you.

NOTE: Many recycling companies will charge a fee for TVs, CRT monitors, and copiers because of the extra safety precautions needed to process these items.

**Central Indiana:** BSS partners with [Technology Recyclers](#) for our semi-annual Electronic Waste Recycling Drives. 100% of the electronic waste they pick up from our office is diverted from landfills. They remove and wipe all devices and provide certificates of destruction. Find them at one of the 130 local drop off events or schedule a pickup on their website.

**Central Tennessee:** [Rutherford County Haley Road](#) has opened an e-waste recycling center for drop off. BSS schedules pickups with [Tri-Star Electronics Recycling](#), the only R2-certified recycler in the area.

**West Michigan:** [Comprenew](#), [PADNOS Turner Recycling Center](#), and some [Kent County Solid Waste](#) facilities accept e-waste through drive or drop off centers. [Valley City Electronic Recycling](#) and PADNOS can pick up in bulk or if you are organizing a drive.

It's up to each one of us to be good stewards of our data, our security, and the environment to keep devices from ending up in the wrong place.

**Sources:**

<https://www.who.int/news-room/fact-sheets/detail/electronic-waste>

<https://ewastemonitor.info/https://tech-recyclers.com/why-recycle-electronics/>

<https://ewcra.org/2024/06/21/e-waste-recycled-in-us/>

<https://reboottechrecycling.com/e-waste-recycling/the-biggest-e-waste-facts-of-2024/>

<https://pirg.org/articles/6-surprising-facts-from-the-uns-2024-electronic-waste-report/>

<https://www.4thbin.com/blogs/role-of-data-security-in-e-waste-management>

<https://pmc.ncbi.nlm.nih.gov/articles/PMC3080922/>







**Return Address:**  
601 3-Mile Road NW, Suite C  
Grand Rapids, MI 49544

## The BSS ADVISOR

[info@bssconsulting.com](mailto:info@bssconsulting.com)

### North-Central Indiana Office

1211 Cumberland Avenue  
West Lafayette, IN 47906  
(765) 742-3440

### Middle Tennessee Office

1026 West College Street  
Murfreesboro, TN 37129  
(615) 819-0600

### West Michigan Office

601 3-Mile Road NW, Suite C  
Grand Rapids, MI 49544  
(616) 776-0400



## Join us for our 30th Anniversary Celebration Events!

### INDIANA

#### Open House

August 27, 2025  
4:00 - 6:00 pm

BSS Indiana Office  
1211 Cumberland Ave.  
West Lafayette, IN

You and a guest are invited for an open house celebration as we toast to three decades of success!

Join us for light food, refreshments, networking, and 1995's trivia.



**RSVP by August 13**

<https://BSS-30th-Indiana.eventbrite.com>

### MICHIGAN

#### Appreciation Lunch

September 10, 2025  
11:30 am - 1:30 pm

Gravity Taphouse & Grille  
3410 Deposit Drive NE  
Grand Rapids, MI

You and a guest are invited for an appreciation lunch as we toast to three decades of success!

Join us for good food, networking with business leaders, and 1995's trivia.



**RSVP by September 3**

<https://BSS-MI-ClientLunch-2025.eventbrite.com>

### TENNESSEE

#### Appreciation Lunch

September 25, 2025  
11:30 am - 1:30 pm

The Boulevard Bar & Grille  
2154 Middle Tennessee Blvd  
Murfreesboro, TN

You and a guest are invited for an appreciation lunch as we toast to three decades of success!

Join us for good food, networking with business leaders, and 1995's trivia.



**RSVP by September 12**

<https://BSS-TN-ClientLunch-2025.eventbrite.com>

